

**WORLD
CRUISES**
世界游轮



16D13N / 16天13晚

**ALASKA CRUISE /
YELLOWKNIFE AURORA HUNTING**

**阿拉斯加游轮 /
黄刀镇追寻极光游**

Tour Code : 16D-AOA



UNITED STATES



CANADA



**GLACIER BAY
NATIONAL PARK**
冰川湾国家公园



YELLOWKNIFE
黄刀镇

Ovation of the Seas®

海洋赞礼号



PIKE PLACE MARKET
派克市场



WONDERFUL JOURNEY, AWESOME EXPERIENCE

美妙旅程, 精彩体验

RipCord® by iFLY® 甲板跳伞



EXHILARATION TAKES A QUANTUM LEAP
量子飞跃的兴奋

01 ACTION AND ADVENTURE 探索极限乐趣

- ✳ North Star® Observation Capsule
- ✳ RipCord® by iFLY® - The first ever skydiving experience at sea
- ✳ FlowRider® - Surf simulator
- ✳ SeaPlex® - Indoor activity space with first bumper cars and roller skating at sea
- ✳ Complimentary Adventure Ocean® Youth Program
- ✳ 北极星 North Star® - 悬臂摩天景观包厢
- ✳ 甲板跳伞 RipCord® by iFLY® - 空气漂浮翱翔体验
- ✳ 甲板冲浪器 FlowRider®
- ✳ 海上多功能运动馆 SeaPlex®
- ✳ 海上历奇青少年俱乐部

02 DELECTABLE DINING 品尝优质料理

- ✳ Specialty Dining* : Wonderland Imaginative Cuisine, Jamie's Italian by Jamie Oliver, Chops GrilleSM, Izumi Japanese Cuisine and Chef's Table
- ✳ Complimentary Main Dining : American Icon Grill, Chic, Silk, The Grande, Windjammer Marketplace
- ✳ Other casual dining options include The Café @ Two 70°, SeaPlex Dog House, Café Promenade and Sorrento's Pizza

*Additional charges apply

- ✳ 特色餐厅*: 仙境坊, 奥利佛意大利餐厅, 美式牛排餐馆, 泉日式餐厅, 主厨餐厅
- ✳ 免费主餐厅: 美国爱肯烧烤, 奇客餐厅, 丝绸之路餐厅, 格蓝迪餐厅, 帆船自助餐厅
- ✳ 其他休闲餐厅选项包括TWO 70°咖啡厅, 热狗屋, 皇家大道咖啡厅及索伦托匹萨屋

*需额外收费

Wonderland 创意料理仙境坊

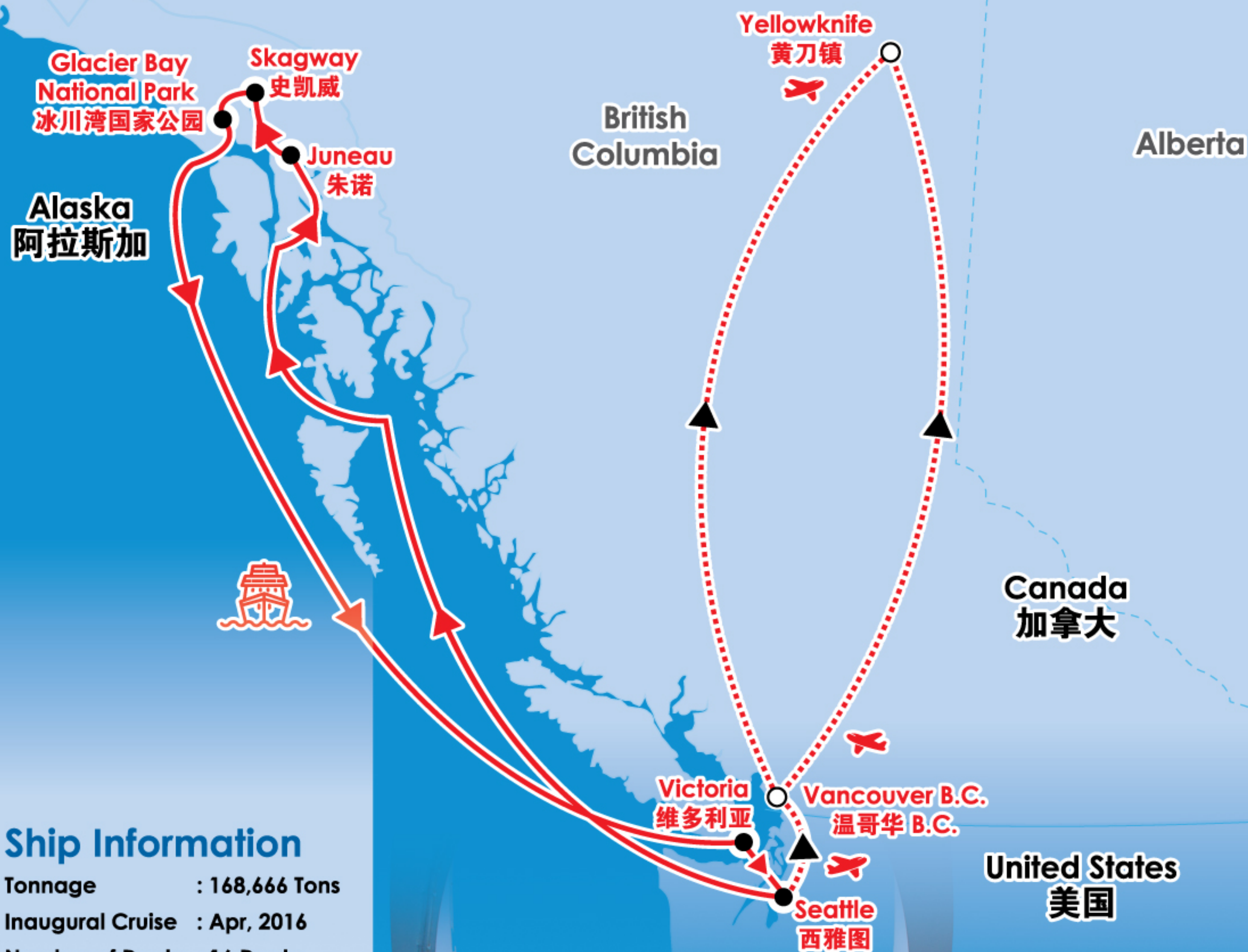


Bionic Bar 机器人酒吧



03 DAZZLING ENTERTAINMENT 纵享精彩娱乐

- ✳ Bars, Clubs and Lounges
- ✳ Bionic Bar® - The first true robotic bar at sea
- ✳ Casino Royale®
- ✳ Original shows by Royal Caribbean Productions
- ✳ Duty-free shopping along the Royal Esplanade
- ✳ 酒吧, 俱乐部和酒廊
- ✳ 机器人酒吧® - 海上第一个采用机器人酒保的酒吧
- ✳ 皇家赌场®
- ✳ 观看皇家加勒比独家出品的舞台剧
- ✳ 许多著名品牌集中在皇家大道, 满足您的购物欲望



Ship Information

Tonnage : 168,666 Tons
Inaugural Cruise : Apr, 2016
Number of Decks : 16 Decks
Capacity : 4,180 Guests

邮轮资料

总重量 : 168,666 吨
首航年份 : 4月2016年
甲板楼层 : 16层
载客量 : 4,180人

Ovation of the Seas[®]
海洋赞礼号





GLACIER BAY NATIONAL PARK

SKAGWAY DOWNTOWN

16D13N
Tour code : 16D-AOA

ALASKA CRUISE / YELLOWKNIFE AURORA HUNTING

DAY 01 KUALA LUMPUR ✈️ TAIPEI ✈️ VANCOUVER

CI722 1440-1930 / CI32 2335-1945

Departure to Vancouver via Taipei, upon arrival at Vancouver International Airport, meet - and - greet session with the local guide then proceed to hotel for overstay night.

DAY 02 VANCOUVER – SEATTLE CRUISE TERMINAL

Depart at 16:00pm

After breakfast, proceed to Seattle. Upon arrival, transfer to pier for cruise check-in. (B/-/D ON BOARD)

DAY 03 SEA-CRUIISING 🚢

(B/L/D ON BOARD)

DAY 04 JUNEAU (CAPITAL OF ALASKA)

12:00pm – 22:00pm 🚢 **Exclude Shore Excursion**

In 1880, three of the largest gold mines in the world were discovered here. By the end of World War II, more than \$150 million worth of gold had been mined. Eventually the mines closed, but the Joe Juneau town was founded and became the capital of Alaska alias "Little San Francisco" and the business of gold was replaced by governmental businesses. Some 30,000 people live in Juneau. Its total land area makes it one of the biggest towns, in size, in the world. Today Juneau is renowned not only for its gold mining and government but also for its breathtakingly beautiful glaciers and stunning views of both water and mountains. 5-8 Minutes Walking Distance from Pier to **Juneau Downtown**. (B/L/D on board)

DAY 05 SKAGWAY (GOLD FIELDS CITY)

07:00am – 20:30pm 🚢 **Exclude Shore Excursion**

Skagway was the gateway to the gold fields for thousands who flocked to Alaska and Yukon with the hope of striking it rich. The gold rush was a boon and by 1898, Skagway was Alaska's largest town with a population around 20,000 people. However, when the gold yield dwindled in 1900, so did the population as miners quickly shifted to new finds in Nome. Today, Skagway has less than 1,000 residents. Yet, it still retains the flavour of the gold rush era. 8-10 Minutes Walking Distance from Pier to **Skagway Downtown**. (B/L/D on board)

DAY 06 GLACIER BAY NATIONAL PARK (SCENIC CRUISING)

06:00am – 15:00pm

Glacier Bay National Park and its epic ice giants are part of the UNESCO World Heritage Site comprised of the Alaska's magnificent park system. Capture the awe-inspiring scenery as you are enjoying an unforgettable day sailing through this dazzling park, where you'll be gliding along emerald water and passing by calving icebergs, and you may breathe in the crispy, fresh air to your heart's content. (B/L/D on board)

****Please wear a warm jacket to view the calving icebergs at the deck****

DAY 07 SEA-CRUIISING 🚢

(B/L/D ON BOARD)

DAY 08 VICTORIA / BRITISH COLUMBIA

12:00pm – 22:00pm 🚢 **Exclude Shore Excursion**

When Vancouver Island was incorporated into British Columbia mainland in 1868, Victoria became the capital of the entire province. Although it's a Port city, Victoria is not as industrial-oriented as Vancouver. The harbours, especially Inner Harbour, are dotted with pleasant crafts, ferries and float planes. The city is renowned for its beautiful gardens, charming houses and a very British feel. (B/L/D on board)



JUNEAU DOWNTOWN

DAY 09 SEATTLE – VANCOUVER

Arrival at 06:00am 🚢

The cruise arrives at Seattle Pier, disembark and to be to be greeted by a young city with a rich history - Seattle. Rebuilt after the Great Fire of 1889, "The Emerald City" has a legacy of vision and strength. Seattle is the birthplace of two modern marvels, Boeing and Microsoft.

The City Tour covers:

Pike Place Market: Home of the world-famous flying fish, is the oldest open-air farmer's market at the West pg 9 Coast and boasts hundreds of artisans, local farmers, fishmongers and curio shops in a vibrant atmosphere. Don't miss the world 1st Starbucks Café just around the corner.

The Space Needle: The landmark of Seattle which was built in 1962 where Seattle is the host city for the World Exhibition. The entire compound is now known as Seattle Centre. After that transfer to pier for cruise check-in. You may enjoy all the facilities onboard.

Premium factory outlet is the largest factory outlet in the state of Washington featuring over 100 outlets retailing branded goods. Arrive at Vancouver by late evening, check-in at the hotel after an awesome dinner. (B/-/D)

DAY 10 VANCOUVER ✈️ YELLOWKNIFE (AURORA VIEWING AT NIGHT)

After breakfast, the tour will take a flight from Vancouver to **Yellowknife**. Yellowknife is the capital of Northwest Territories of Canada. It is located 450km away from the Arctic Circle. The city is located at the Aurora Oval. Aurora can be seen out of 240 nights in a year. Upon arriving at Yellowknife, lunch will be served, and will then proceed to the city for sightseeing. In the evening, the tour will check in at the hotel and enjoy dinner. At night, the tour will drive up to witness **Aurora**. (B/-/D)

DAY 11 YELLOWKNIFE - CAMERON FALL (AURORA VIEWING AT NIGHT)

After breakfast we will head to the **Cameron Falls**. The Cameron Falls is located at the Waterton Lakes National Park in Alberta. Once after a heavy downpour, the red sedimentary rocks underneath the Cameron Falls were washed upwards, and it changed the white water flow of the fall, reflecting a rare red colour. The Waterton Lakes, where the waterfall has a lot of red sedimentary rocks, were originated from the Rocky Mountains. At noon, we will have an outdoor picnic here. Will head back to Yellowknife by dinner, after dinner we will kick start the 3rd journey of Aurora exploration. (B/L/D)

DAY 12 YELLOWKNIFE - GREAT SLAVE LAKE (AURORA VIEWING AT NIGHT)

After breakfast at the hotel, we will head to the 2nd largest lake in Canada - **Great Slave Lake**, to view the pleasant sceneries. The water volume of the Great Slave Lake is 2 trillion m³, the surface area is approximately 28,000km². It is famous of its Red Indian tribes, who had once stayed at the bank of the lake. These Red Indian tribes were chased by the Cree Indians to the northern regions, and were addressed as "Slaves" by them. You can ride a boat and relax here, and we will enjoy a lunch at a local eatery. By dinner, we will be back at Yellowknife, and once again head off to capture the Aurora. (B/L/D)

Yellowknife in the Northwest Territories of Canada, hands down. The city and surrounding area is situated directly beneath the aurora oval, and higher percentage of clear weather, therefore, a much higher viewing probability. When you stay for 3 nights of aurora-viewing, you have a 95 percent chance of seeing the aurora at least once.

DAY 13 YELLOWKNIFE ✈️ VANCOUVER

After breakfast, it is free and easy time. Then, we will head to the airport with transportations prepared. We will then take a flight back to Vancouver. (B/L/-)

DAY 14 VANCOUVER

The Vancouver area is surrounded by some of the most stunning natural treasures in the world. Mountains. ocean. rainforest. parks and beaches. This is a city like no other!

Queen Elizabeth Park : Is a 130-acre municipal park. Its surface was scarred at the turn of twentieth century when it was quarried for its rock, which served to build Vancouver's first roadways. **Stanley Park :** This 400—hectare (1,000~acre) public park is one of Vancouver's greatest attractions, an area of wilderness encircled by a scenic seawall with mesmerizing gardens, a lagoon with gliding swans, beaches, concession stands, playgrounds, totem poles, statuary, a miniature railway, and much more. **Robson Street :** the ultimate shopping destination of downtown Vancouver. Spend the afternoon browsing various boutiques and designer clothing stores along Robson Street. This is one of Vancouver's most happening neighbourhoods. **Gastown & the Steam Clock :** Vancouver's oldest neighbourhood. Be sure to stop and watch the famous Gastown Steam Clock whistling out the quarter hour. **Chinatown :** Stroll along Dr. Sun Yet-Sen Classical Chinese Garden and the Authentic Chinese Market. After dinner, transfer to airport for flight check-in. (B/L/D)

DAY 15 VANCOUVER ✈️ TAIPEI

CI31 0200-0520+1

DAY 16 TAIPEI ✈️ KUALA LUMPUR

CI721 0850-1330

Important Note : Cruise line may reserves the rights to make changes on itinerary, timing on all embarkations / disembarkations, and port(s) call cancellation due to weather condition or specific reasons.



YELLOWKNIFE



Aurora Borealis -

Sighting of this visual spectacle is dependent on solar activity; cloud cover & general weather conditions. Hence it can never be guaranteed.



煤气镇

黄刀镇

16天13晚

Tour code : 16D-AOA

阿拉斯加游轮 / 黄刀镇追寻北极光游

第1天 吉隆坡 ✈️ 台北 ✈️ 温哥华

CI722 1440-1930 / CI32 2335-1945

搭乘华航飞往温哥华途径台北，抵达后由专车接送往酒店休息。

第2天 温哥华 - 西雅图

16:00PM 出发

早餐后，驱车前往美国西雅图邮轮码头，办理登船手续。您之后可自由享用船上的设施。(早/-/晚餐)

第3天 海上航行 🚢

(早/午/晚餐)

第4天 朱诺 (阿拉斯加首府)

12:00pm - 22:00pm 🚢 不包含岸上观光

1880年，朱诺因发现金矿而兴建。1990年初，淘金热潮未退，继而成为阿拉斯加州的首府。码头距离朱诺市区大约步行5至8分钟。(早/午/晚餐)

第5天 史凯威 (旧淘金城)

07:00am - 20:30pm 🚢 不包含岸上观光

位于阿拉斯加东南方内湾航道最北端。当年淘金热潮的建筑和氛围仍保存在史凯威城中，例如：木制人行道、马车、老式沙龙与美不胜收的自然美景。走在百老汇大街的木制人行道，可参观第99小径历史博物馆，里头存放了很多当年淘金热潮的精致艺术品。您也可以到20世纪初就开业的红洋葱沙龙的桃花心木制酒吧里，用口哨点一杯饮料。码头距离史凯威镇大约步行8至10分钟。(早/午/晚餐)

第6天 冰川湾国家公园 (内湾航游)

06:00am - 15:00pm

冰川湾国家公园于1979年被联合国教科文组织列为世界自然遗产，也被划入生物圈保护区，素有“极地奇观”的美称。公园面积达133万5492公顷，包括万2000公顷咸水区和1415公里长的海岸线。这里有丰富的自然景观和生态体系，典型的冰川成了迷人景色。连绵的高山，环抱着避风港的海滩、峡湾、潮汐冰川都是这一地区的特色景观。冰河湾沿海地区属于海洋性气候，夏季凉爽潮湿，冬季气候温和湿润。

内陆则是高海拔地区，气候终年严寒。丰富多变的自然环境也给众多动植物提供了良好的居住场所，区内植被丰富，从岩石嶙峋、白雪高山地带到长满苍翠繁茂温带雨林的沿海地带逐次变化。当地也是大灰熊和北美驯鹿的乐园。区内还有各种各样的动物，例如棕熊、黑熊、山羊、座头鲸、海豹和鹰等。(早/午/晚餐)

第7天 海上航行 🚢

(早/午/晚餐)

第8天 维多利亚市 / 加拿大卑诗省

12:00pm - 22:00pm 🚢 不包含岸上观光

维多利亚市在十九世纪是冒险家和淘金者的乐园，1868年成为英国不列颠哥伦比亚省的首府。维多利亚不像面向工业的温哥华海港。当地尤其是内港，都停放着游艇，渡轮和上飞机。这是一座拥有美丽的花园、迷人的房子、处处流露英化浪漫风情。(早/午/晚餐)

第9天 西雅图 / 温哥华

06:00am 抵达

早上返回西雅图以后，前往参观派克市场(Pike Place Market)。独特的“飞鱼”秀是当地一道风景线。星巴克(Starbucks)发源地及市集内各种手工艺品和鲜花小小摊档也吸引不少世界各地游客慕名而至。之后，前往西雅图中心。它是1967年西雅图举行世界博览会的场地。其太空针塔已成为西雅图市的独特地标。下午前往工厂直销中心，尽情购物。傍晚抵达加拿大温哥华，享用丰富的晚餐后送往酒店休息。(早/-/晚餐)



冰川湾国家公园

第10天 温哥华 ➔ 黄刀镇

早餐后从温哥华乘搭内陆飞机前往黄刀镇。黄刀镇是加拿大西北地区的首府，距离北极圈450公里。当地处在极光椭圆环带区，每年有240晚能看见极光。抵达黄刀镇后，先享用午餐，之后赴市区观光。傍晚，下榻酒店并享用晚餐。晚上驱车前往观赏极光。(早/-/晚餐)

第11天 黄刀镇

早餐后前往卡梅伦瀑布。卡梅伦瀑布座落在加拿大阿尔比省的沃特顿湖国家公园中。卡梅伦瀑布有一次暴雨后，把底下的红色沉积岩冲刷上来，改变了瀑布的白色水流，突然呈现罕见的红色。瀑布所在的沃特顿湖有很多红色沉积岩，它们源自洛矶山脉。中午将在这里户外野餐。晚餐时间返回黄刀镇，用餐后开始第三次探索极光之旅。(早/午/晚餐)

第12天 黄刀镇

在酒店用完早餐以后，即前往加拿大第二大的湖泊一大奴湖，欣赏怡人美景。大奴湖蓄水量高达2万亿立方米，面积近2.8万平方公里。大奴湖因岸边曾居住过印第安部落而得名，这些印第安部落被印第安人中的克里人赶到了北部地区，并被他们称为“奴隶”。您可在这里乘船消闲放松，之后在当地享用午餐。晚餐时间返回黄刀镇，然后再次前往捕捉极光。(早/午/晚餐)

第13天 黄刀镇 ➔ 温哥华

早餐后，可自由活动。之后，乘坐专车送往机场，搭机返回温哥华。(早/午餐/-)

黄刀镇一位于北光光环中心，这一带的极光距离地平线很近，仿伸手就能碰到，黄刀镇是世界上唯一每年能有250位次机会观看得到极光，世界上唯一的极光追踪天文台也设置于此。



“极光”这种自然界的视觉奇观，取决于当天的天气条件如太阳粒子的活动，云层与天气等等。所以不能保证极光的出现。

第14天 温哥华

早餐后，开始温哥华市区游：**伊丽莎白王后公园**：伊丽莎白王后公园是个占地130英亩市区公园。在二十世纪初，该处开采的石头被用作温哥华早期街道的路基。**史丹利公园**占地1000英亩，园内林木葱葱、绿意满布，古木参天，不少树龄逾百年。公园三面环海，内有水族馆、高尔夫球场等设施。**加拿大广场**，前身为1986年世界博览会展览厅之一，现已改为邮轮码头、酒店及会议中心。**煤气镇**，温哥华的老城镇，也是温市发源地。1977年建造的世界第一座蒸气钟如今已成为温哥华地标。**唐人街**，北美第二大华埠。当地的中山公园及中华文化中心也是温哥华旅游景点。(早/午/晚餐)

第15天 温哥华 ➔ 台北

CI31 0200-0520+1

第16天 台北 ➔ 吉隆坡

CI721 0850-1330

重要提示：所有停靠港之启航/抵达/停靠时间会按航行情况有所调整/更改/取消，以邮轮公司最后安排为准。



史丹利公园



黄刀镇

内侧 舱房

Interior
Stateroom



海景 舱房

Oceanview
Stateroom



阳台 舱房

Balcony
Stateroom



START KICKING OFF YOUR
ADVENTURE NOW!

开启您的 探索之旅

Glacier Bay National Park 冰川湾国家公园



Skagway Downtown 史凯威镇



Juneau 朱诺



Gastown & the Steam Clock 煤气镇



Yellowknife 黄刀镇



Pike Place Market 派克市场



GENERAL INFORMATION

★ UNITED STATES & CANADA ★

Exchange Rate/ Currency 货币/汇率 	Seattle 西雅图 1 United State Dollar (USD) 1 美金 (USD) = RM4.20 Canada 加拿大 1 Canadian Dollar (CAD) 1 加币 (CAD) = RM3.20 <div style="text-align: right;">*Estimate / 预计</div>
Telephone Code 拨号代码 	Seattle 西雅图 00+1206 + Local Number 当地号码 Canada 加拿大 00+1604 + Local Number 当地号码
Time Zone 时差 	Seattle 西雅图 UTC -07:00 (15hour behind of Malaysia 标准时差慢马来西亚时间15小时) Canada 加拿大 UTC -07:00 (15hour behind of Malaysia 标准时差慢马来西亚时间15小时)
Weather 气候 	Seattle 西雅图 14°C - 22°C (August & September) Canada 加拿大 12°C - 21°C (August & September)
Aircraft Type 飞机型号 	 <div style="float: right;">China Airlines</div>

Departure Date:	<input type="text"/>	Flight :	<input type="text"/>
Cruise Fare:	<input type="text"/>	Airport Tax & Fuel Surcharge:	<input type="text"/>
Gratuities, taxes & Fees:	<input type="text"/>	Visa:	<input type="text"/>
NCCF:	<input type="text"/>	Travel Insurance:	<input type="text"/>
		TOTAL :	<input type="text"/>

Travel Agent:



Operated By
ICE HOLIDAYS SDN BHD
(230643-X) KPK/LN:2441